

Culture in vivo, ASBL

Training Centre

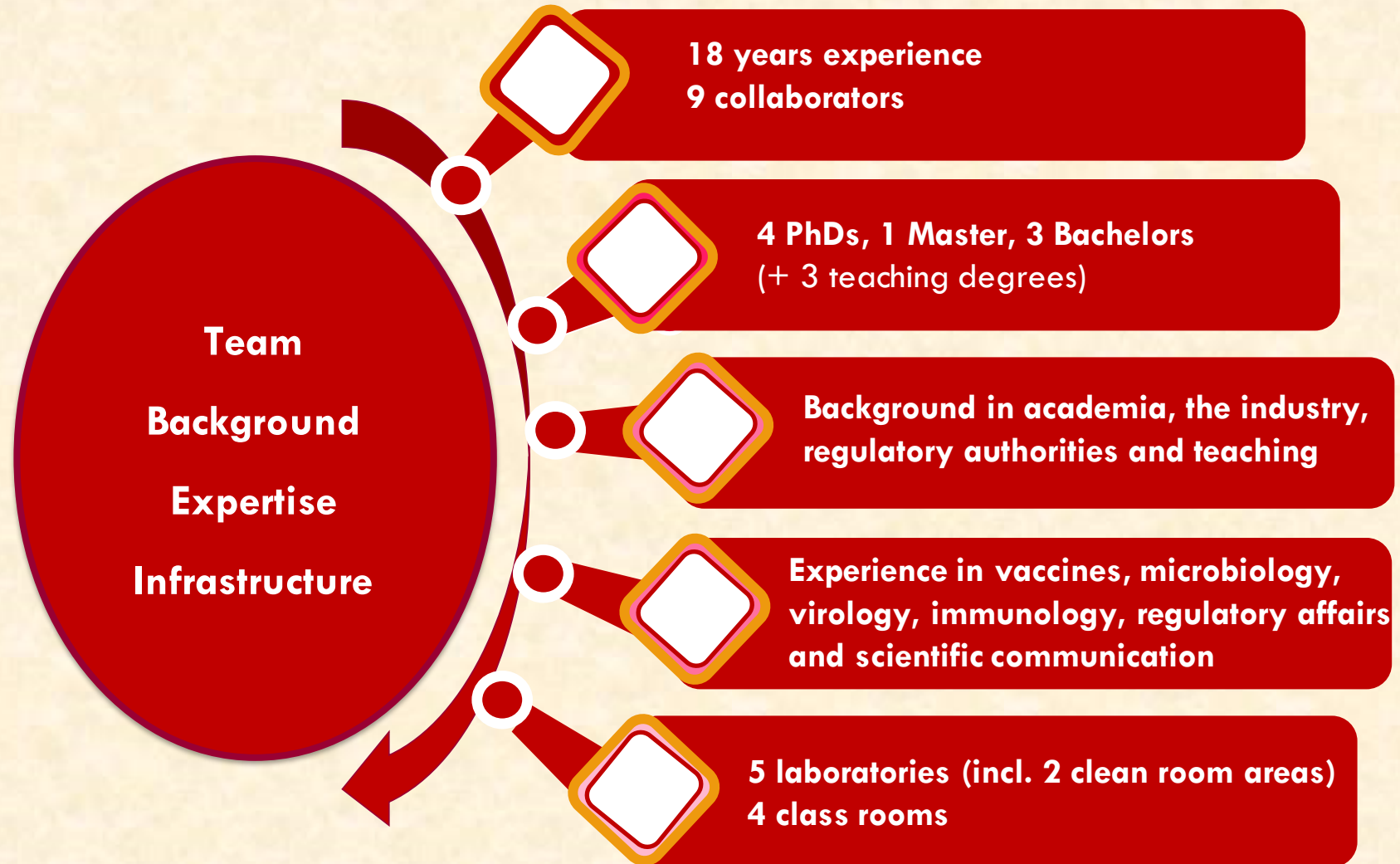


Culture in vivo asbl
Rue du progrès, 4
1400 Nivelles
Tel : 067/87.86.56
Email : culture@invivo.be



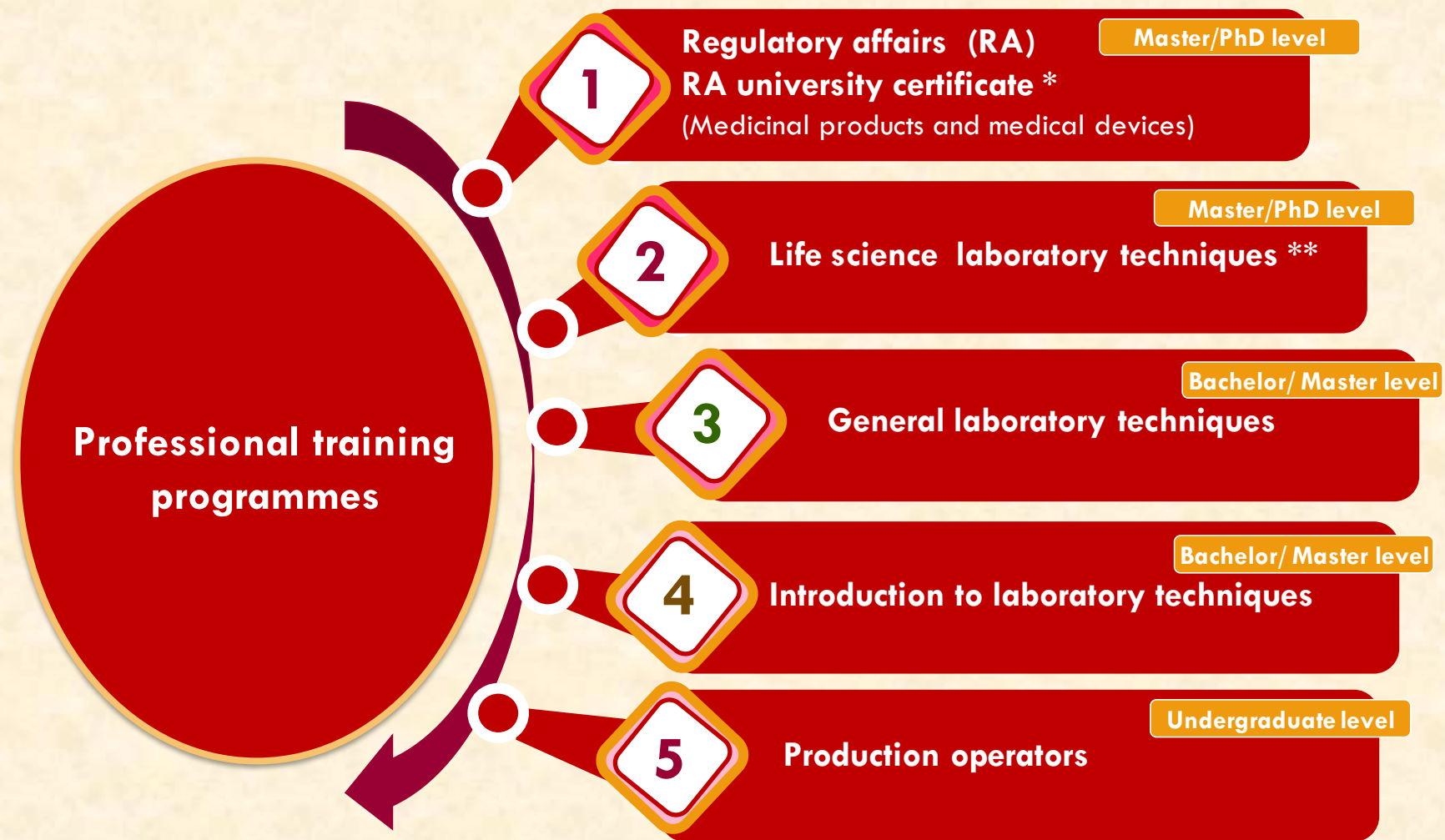
LE FONDS SOCIAL EUROPÉEN ET LA WALLONIE
INVESTISSENT DANS VOTRE AVENIR







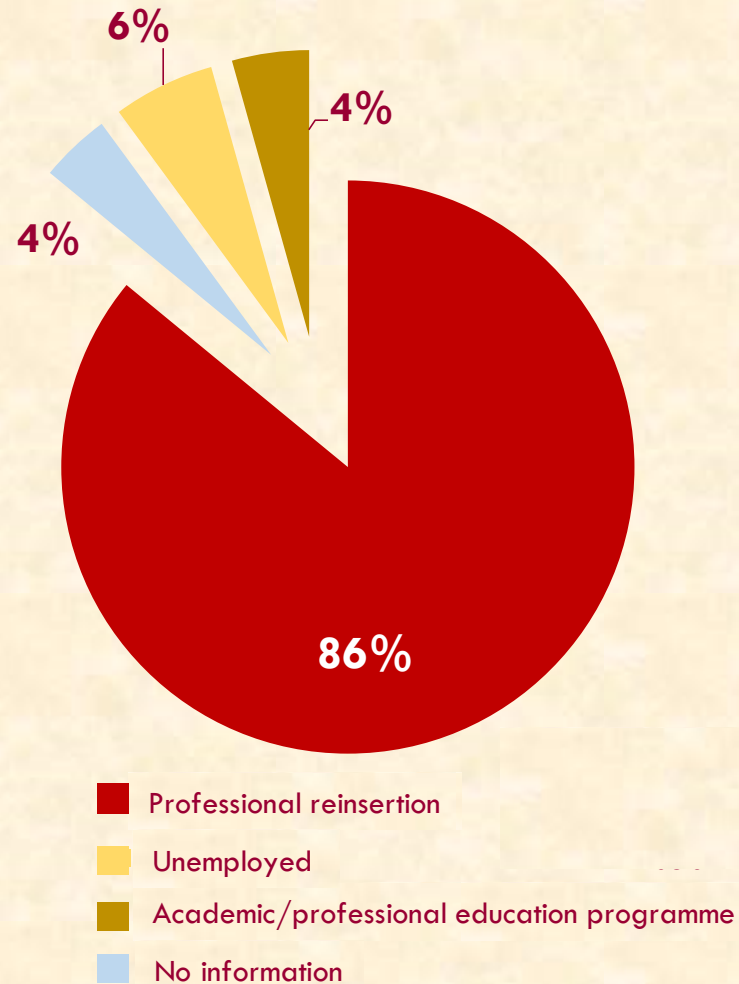




*In collaboration with Université de Liège, Université de Namur and Centre de Formation en Biotechnologie du Forem de Liège

**Microbiology, virology, immunology, molecular biology, cell culture

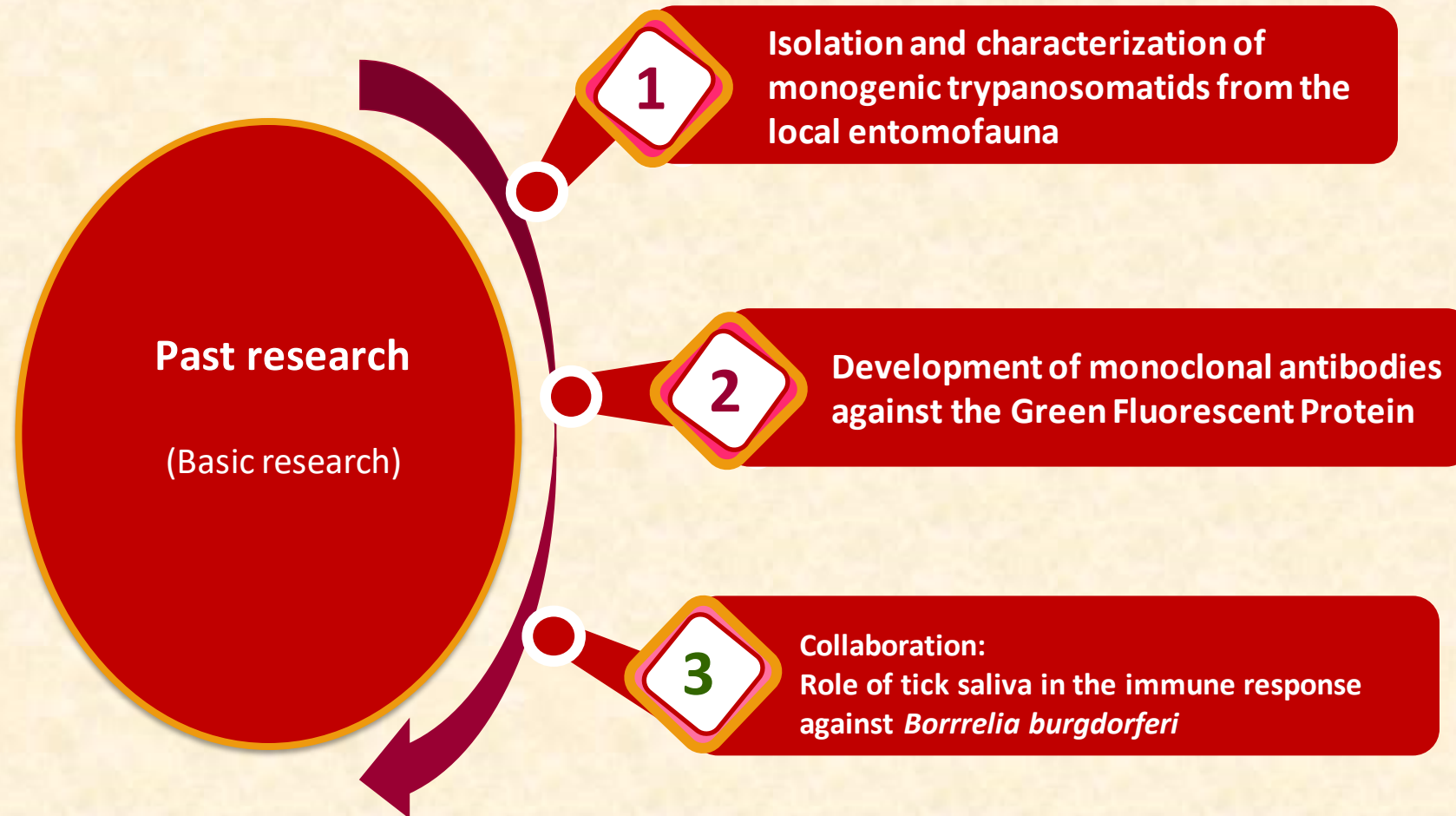
Professional reinsertion rates of our trainees (6 months after finalising their training programmes)



Cumulative data of the following programmes:

- « Biotechnology » programme
- « Cell culture techniques » programme
- « Regulatory affairs » programme





Culture in vivo ASBL – Training centre



Culture in vivo asbl
Rue du progrès, 4
1400 Nivelles
Tel : 067/87.86.56
Email : culture@invivo.be

